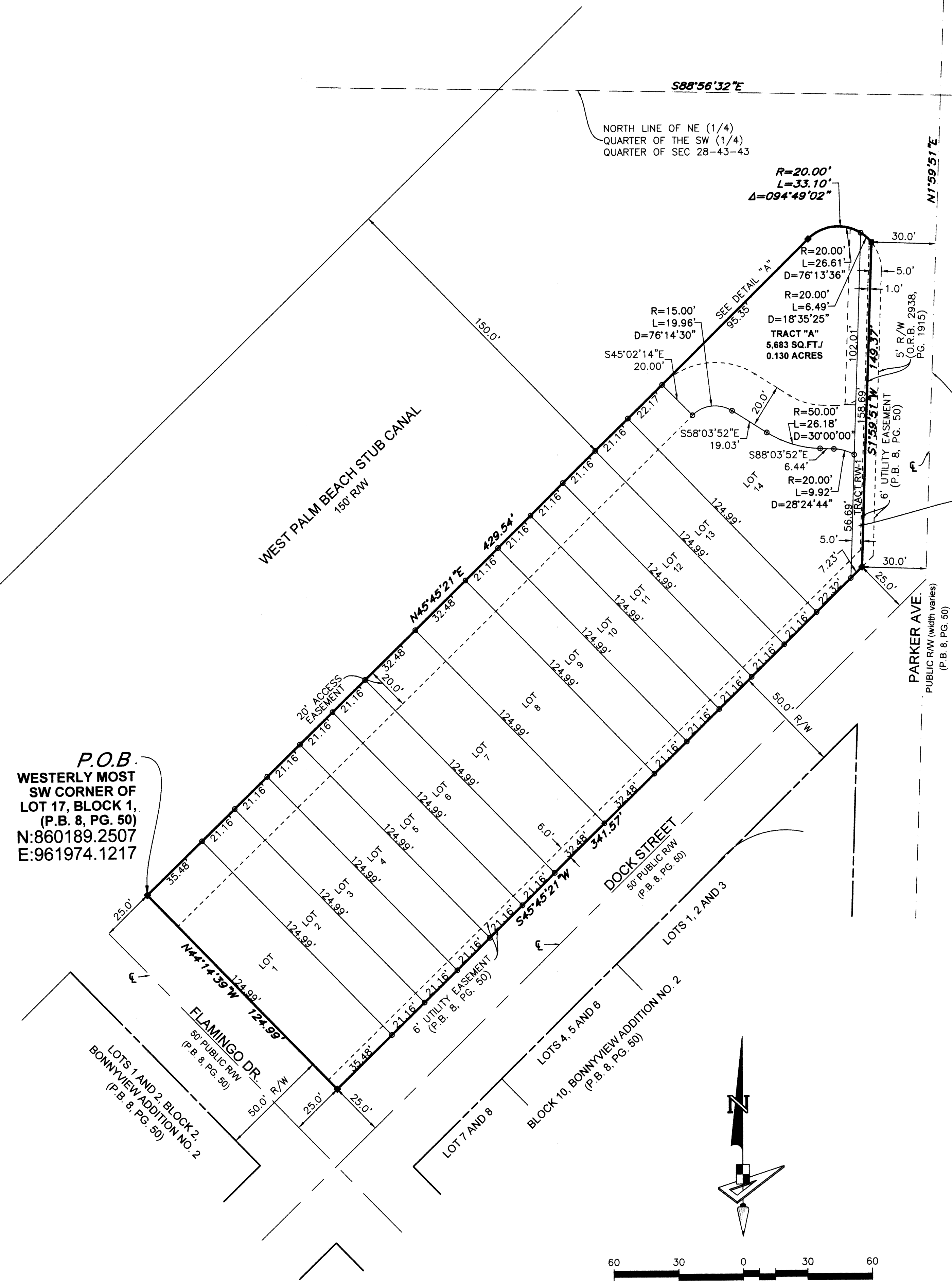
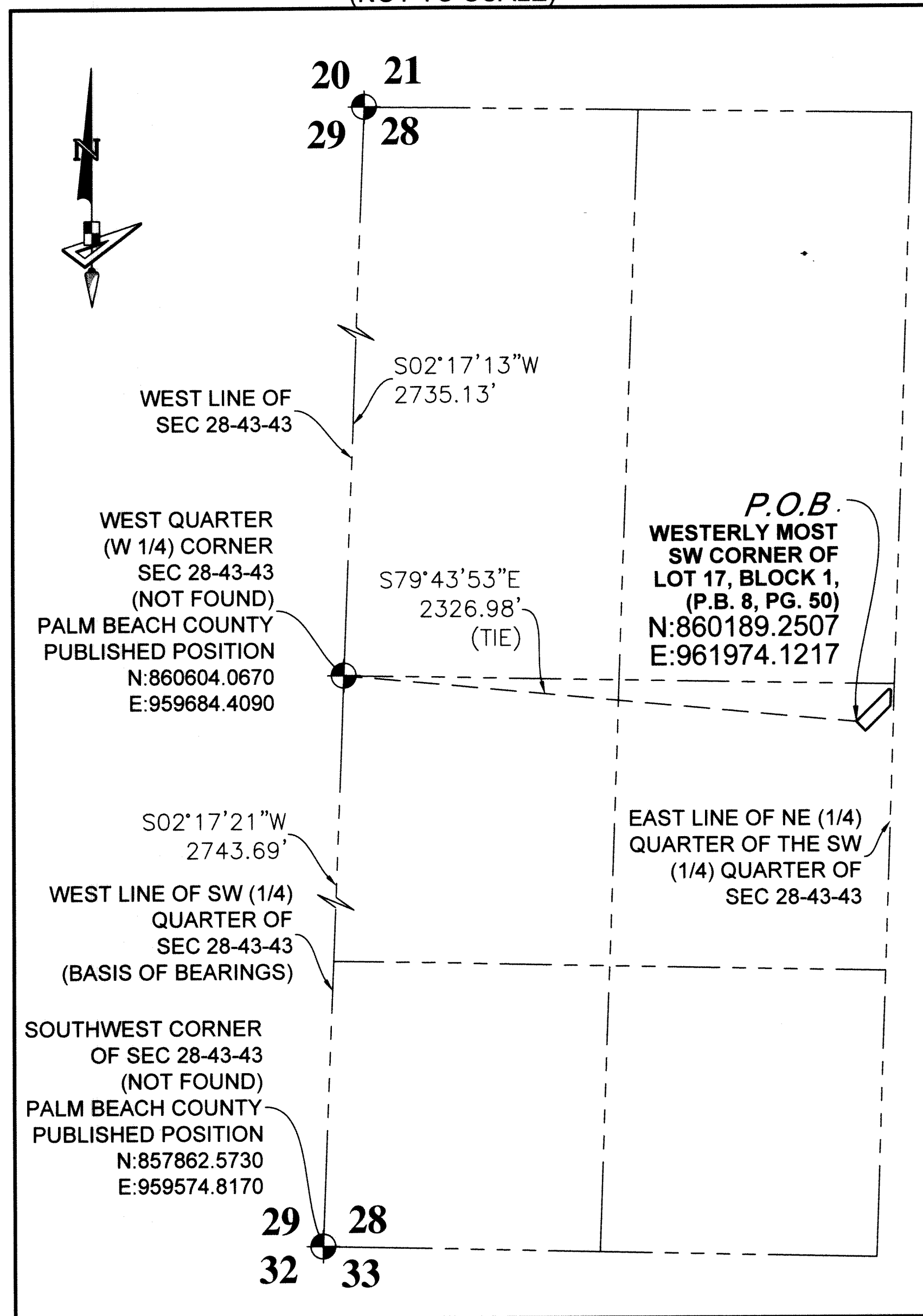


PARK CENTRAL RPD

BEING A REPLAT OF LOTS 1 THROUGH 17, INCLUSIVE, BLOCK 1, OF BONNYVIEW ADDITION NO. 2, RECORDED IN PLAT BOOK 8, PAGE 50, OF THE PUBLIC RECORDS OF PALM BEACH COUNTY, FLORIDA, LYING IN SECTION 28, TOWNSHIP 43 SOUTH, RANGE 43 EAST, CITY OF WEST PALM BEACH, PALM BEACH COUNTY, FLORIDA.

100

SECTION DETAIL
(NOT TO SCALE)



STATE PLANE COORDINATE NOTES:
 a. ALL DISTANCES ARE GROUND UNLESS OTHERWISE NOTED
 b. SCALE FACTOR= 1.0000468
 c. COORDINATE SYSTEM = 1983 STATE PLANE TRANSVERSE MERCATOR PROJECTION
 d. DATUM = NAD 83-1990 ADJUSTMENT
 e. ZONE = FLORIDA EAST ZONE
 f. GROUND DISTANCE X SCALE FACTOR = GRID DISTANCE
 g. LINEAR UNIT = U.S. SURVEY FEET
 h. PLAT BEARINGS = GRID BEARINGS
 NO ROTATION

LEGEND

P.O.B. ----- POINT OF BEGINNING
 P.B. ----- PLAT BOOK
 O.R.B. ----- OFFICIAL RECORDS BOOK
 PG./PG(S) ----- PAGE(S)
 R/W ----- RIGHT-OF-WAY
 28-43-43 ----- SECTION-TOWNSHIP-RANGE
 R ----- RADIUS
 L ----- ARC LENGTH
 Δ ----- DELTA ANGLE
 C ----- CENTER LINE
 LB ----- LICENSED BUSINESS
 PRM ----- PERMANENT REFERENCE MONUMENT
 ■ ----- SET 4"x4" CONCRETE MONUMENT WITH 2" ALUMINUM DISK STAMPED "PRM LB 7768"
 ○ ----- SET 1/2" IRON ROD WITH CAP STAMPED "LB 7768"

